



THE BUNKHOUSE



GUEST WELCOME BOOK



Hello and Welcome to the Red Road Farm 'Bunkhouse' — we're so happy to host you!

Our equestrian stable has brought us — and our equine family — infinite joy over these many years. Now, we hope that you can experience such joy and quiet time in our cozy, western-style bunk room and on our beloved 200 acres of meadows, wildlife sanctuary, mountain views, hiking, horseback riding, mountain biking, and X-country ski and snowshoe trails.

Welcome! And Make yourself at home!



ABOUT THE BUNKHOUSE

Even before we built our Mountain House on this unique land, we built our horse stable. As Scott Caan once said 'Good things happen when you get your priorities straight.'

The Bunkhouse story unfolds like this:

When we rescued this special acreage from developers, we were still living across town in a log cabin even as our beloved horses — western movie star mounts — were still back in New Mexico. Having wrapped their action-packed work on suchs movies as 'Silverado', 'The Three Amigos', and 'Young Guns', we wanted to bring them home with us and let them live the rest of their lives in peace. on green Vermont meadows.



So, we designed and built a 6-stall equestrian barn fit for our four-legged stars, replete with large common area, heated tack room, heated bath and shower, coffee room, and more.





Over the years this space has served as retirement home for movie star horses, the headquarters for the Horse of the Americas registry, and center for the Red Road Farm American Indian Horse Conservancy – a non-profit ‘ancient breeds’ program in association with Virginia Tech.

It has also been a profound well of inspiration as many popular horse movies and westerns were written right here. We hope you will feel the love and passion (and inspiration) that has imbued our stable and bunkhouse for so many decades. We hope you will sense the beauty and peace and creative spirit that this place has consistently given us. Mostly, we hope you have a restful and wonderful time and come back again.

—John, Richela, and Giovanni Fusco





A NOTE ABOUT BUNKHOUSE LIVING

Red Road Farm is National Wildlife certified habitat, a rare bird (bobolink) habitat recognized by Audubon, and a sanctuary for endangered monarch butterflies. Please note that the Bunkhouse barn keeps its doors open for our beloved barn swallows. These attractive bird neighbors have forever been welcomed by farmers; mainly because they are beneficial insectivores who feed on flying bugs.

Did you know that a barn swallow tattoo is traditional among sailors as a symbol of a safe return?

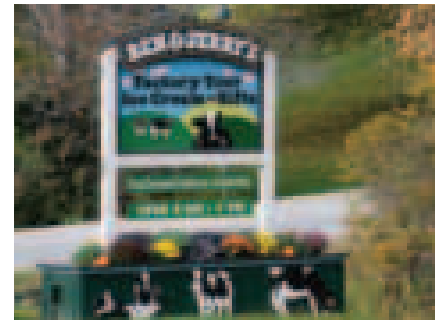
Of course, when a barn is open habitat for swallows, there will be some residual bird droppings in the common area. Fortunately, our swallows only leave droppings outside of the bunkhouse living spaces.



As you explore the meadows, orchard, and woods, you might catch sight of such beautiful Vermont wildlife as red fox, porcupine, fisher, deer, and even moose. Our American Black Bear population is very healthy, and although it's unlikely that you'll see one, if you do, please remember: Black Bears are not Grizzly. If they see you, they will most likely run as fast as they can in the opposite direction. Here on Red Road Farm, we are veteran naturalists with a ton of black bear experience; we are proud to be patrons and allies of a bear cub orphanage just across the state line in New Hampshire.

So while you do not need to be afraid of our local black bears, please do remember that these are large, strong wild animals that should be treated with respect and appreciated from a distance to ensure your safety as well as the bear's. Do not leave any food out in ANY AREA of the barn and be sure to keep the outdoor grill area free of tempting food or leftovers. What to do if you encounter a bear? Please scan the code below. It will take you to more information from our friends at Vermont Fish and Wildlife.





AREA HIGHLIGHTS

- Mountain Resorts
- Breweries, Wineries, Cideries & Distilleries
- Cross Country/Nordic/Backcountry Ski Areas
- Mountain Biking/Fat Biking
- Golf Courses (Traditional/Frisbee/Miniature)
- Spas and Wellness Retreats - ON-SITE MASSAGE AVAILBLE
- Local Farmers' Markets
- Stowe Village (Shopping, Dining, Entertainment, Rec Path, Bike Rentals, bowling)
- State Parks (Hiking, Swimming, Paddling, Fishing)
- Cold Hollow Cider Mill
- Cabot Cheese Creamery and Annex
- Ben & Jerry's Ice Cream Factory
- City of Burlington (Shopping, Dining, Entertainment, Museums, Parks, UVM)
- Antiques
- Fishing

LOCAL BREWERIES, WINERIES, CIDERIES & DISTILLERIES



The Alchemist



Lawson's Finest Liquids



Boyden Valley Winery



Lost Nation Brewing



Brewster River Brewery



Prohibition Pig Brewery



Caledonia Spirits



Rock Art Brewery



Cold Hollow Cider Mill



Stone Corral Brewery



Green Mountain Distillers



Stowe Cider



Hill Farmstead Brewery



Ten Bends Beer



Idletyme Brewing



von Trapp Brewing



MAP
LOCAL BREWERIES,
WINERIES,
CIDERIES,
DISTILLERIES

MTB/FAT BIKE TRAIL LOCATOR



MORRISTOWN

Cady's Falls trails

- parking area at the end of Duhamel Road

STOWE

Adams Camp

- turn on to Ranch Brook Road and park in the designated area (road is class 4)

Cady Hill Forest

- park across from Blessed Sacrament Church

Cotton Brook/Little River

- park at the gate on Cotton Brook Road

Sterling Forest

- take Sterling Valley Road to Sterling Gorge Road.

Trapp Family Lodge trails

- located at Trapp Family Lodge

WATERBURY

Little River State Park trails

- take Little River Road, just west of Waterbury village

Perry Hill trails - WATA

- park at the lot on River Road, off S. Main Street

HYDE PARK

Cricket Hill trails

- park at the lot on Cricket Hill or Lamoille Union High School, Route 15

HARDWICK

Hardwick trails

- park at Hazen Union High School or Green Mountain Tech Center

CAMBRIDGE

Valley trails

- park at Valley Dream Farm, Pleasant Valley Road

Midland trails

- park at Brewster River Park, Canyon Road; or near the intersection of Clif Reynolds and Edwards roads

Smugglers' Notch trails

- at Smugglers' Notch Resort

MAP LEGEND



Mountain Bike Trail



Lamoille Valley Rail Trail - open



Road

SHOPS/RENTALS

Power Play Sports, Morrisville
powerplaysportsvt.com

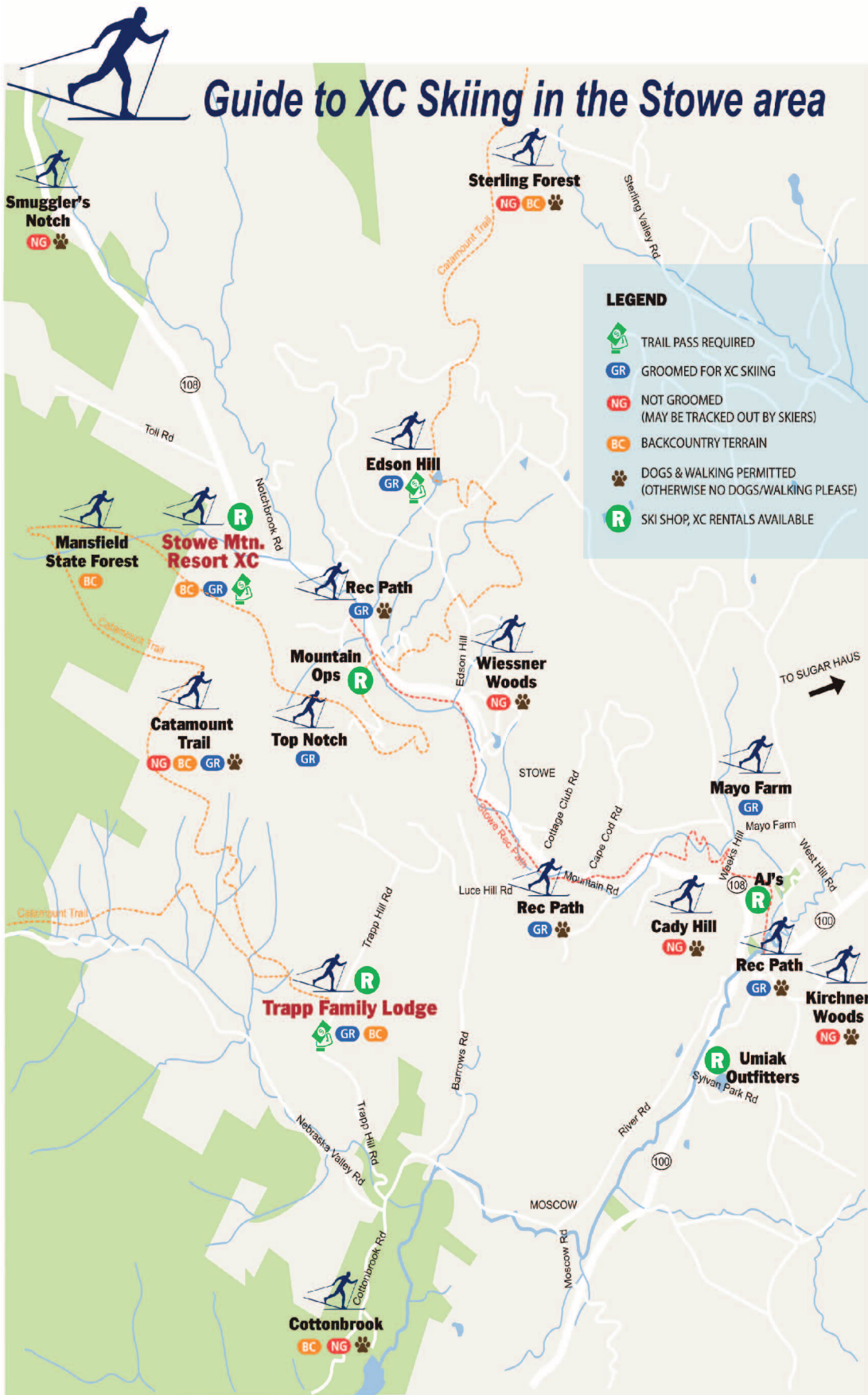
Chuck's Bikes, Morrisville
chucksbikes802.com

AJ's, Stowe
stowesports.com

Trails can be used with fat bikes, XC skis and snowshoes in winter ONLY

LOCAL MOUNTAIN BIKE TRAILS





LOCAL MOUNTAIN RESORTS & AREAS

- STOWE MOUNTAIN RESORT | stowe.com
- SMUGGLERS' NOTCH RESORT | smuggs.com
- JAY PEAK RESORT | jayepeakresort.com
- SUGARBUSH RESORT | sugarbush.com
- MAD RIVER GLEN | madriverglen.com
- BOLTON VALLEY RESORT | boltonvalley.com
- COCHRAN'S SKI AREA | cochranskiarea.com